

Prairie du Chien Memorial Hospital Association, Inc. awards six Foundation Scholarships to 2010 Graduates



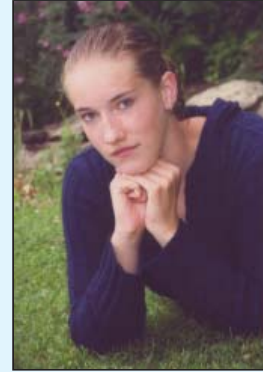
Abigail Bries
MFL MarMac
High School
Nursing – \$8,000



Emily Jackson
Prairie du Chien
Senior High School
Pharmacy - \$8,000
deferred



Sara Koresh
Prairie du Chien
Senior High School
Nursing - \$8,000



Molly Ruhser
Central Community
High School
Nursing - \$8,000
deferred



Felicia Strand
DeSoto High School
Nursing - \$8,000



Whitney Wubbena
MFL MarMac
High School
Nursing - \$8,000
deferred

Congratulations and best of luck to these high school graduates who were chosen by the Prairie du Chien Memorial Hospital Foundation Scholarship Committee as recipients of continuing education scholarships in their chosen health occupation career.

In an effort to maintain professional health care workers, the Foundation of Prairie du Chien Memorial Hospital Association, Inc. has a program available to encourage students to return to this area. Qualified recipients must be graduating seniors in good academic standing and must choose to further their education in a health occupation career, excluding those in medical school. The program allows up to \$2,000 per year with a maximum of \$8,000. This is a low interest loan but can be forgiven if employed by Prairie du Chien Memorial Hospital Association, Inc. upon graduation. The recipient is paid a regular hourly rate of pay, along with the loan amount being forgiven at a rate of one and one half dollars (\$1.50) for every hour worked. Applications are released to area high schools each February and are to be completed and returned by the end of March. A selection committee of the Foundation interviews and awards scholarships to those considered best eligible to fill the awards being offered by the hospital.

Since its inception in 1990, the program has been very successful in assisting approximately 65 high school graduates in achieving their dream of becoming a member of the health care workforce. We are proud to report that fifteen of these graduates returned to Prairie du Chien Memorial Hospital to work as health care professionals.

For more information regarding the scholarship program, contact Kimberly Krogan at Prairie du Chien Memorial Hospital at (608) 357-2234, or local high school guidance counselors.



The Foundation Scholarship Committee consists of nine members from surrounding communities. Seated from left: Gloria Wall; Janet Finn; and Helen Valley, Scholarship Chairperson. Standing: Bill Sexton, CEO; David Doll; Harold Brown; Maria Brummel; and Ron Sedgwick. Not pictured: Mary Ann Garrity.